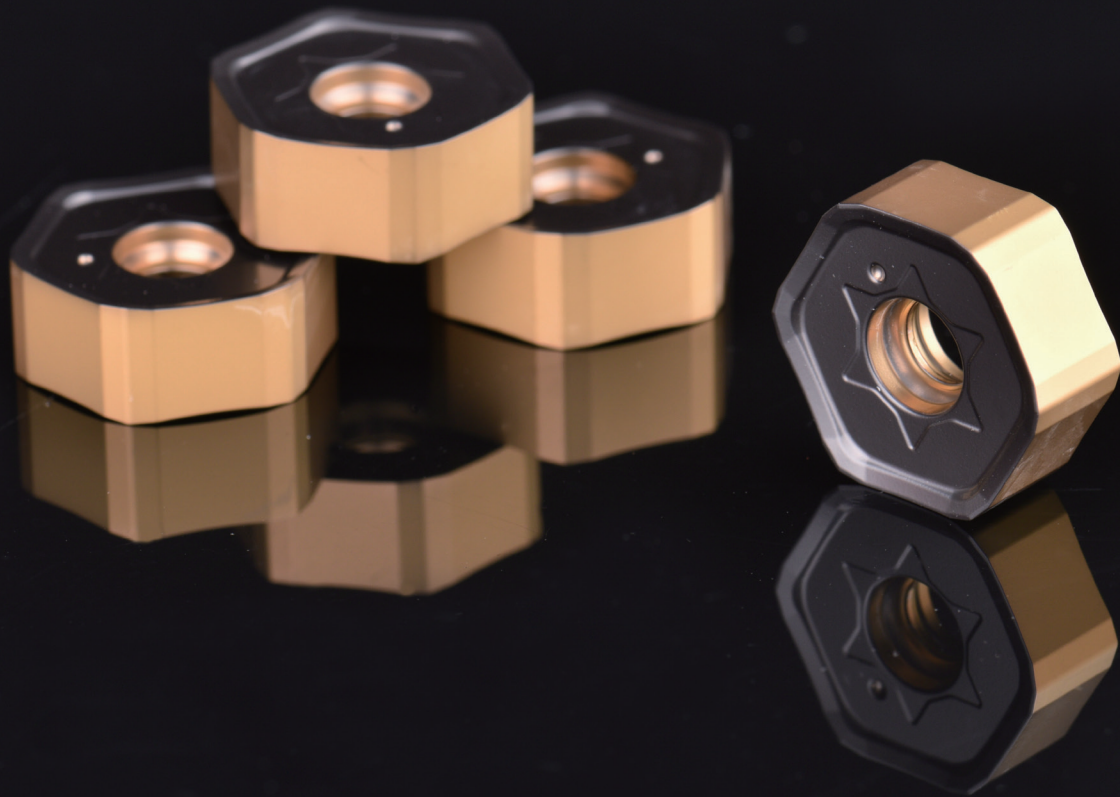


NEW
PRODUCT!

HN09 Negative Hexagon Face Milling Insert with 12 Cutting Edges

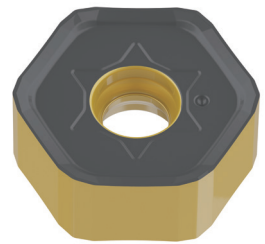


Product introduction


Achteck new negative hexagon face milling insert HNGX 0906ANN has a wiper edge design and geometry for higher cutting edge strength, and better machining result. The insert's substrate and coating are suitable for milling steel, cast iron and other materials.

HN09 insert introduction

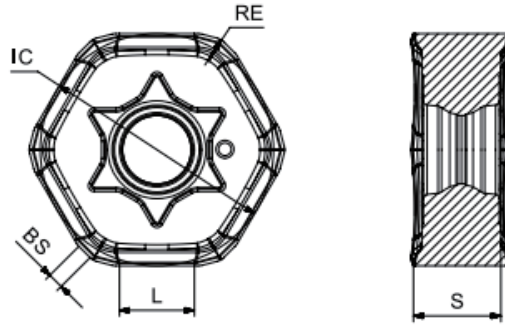
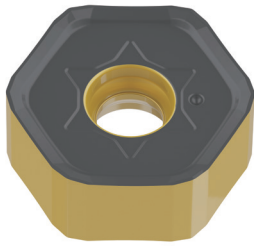
- $a_{p_{max}}=5\text{mm}$
- Double sided insert with 12 cutting edges, very economical
- Wiper edge for better surface finish
- Ground insert for high precision



Geometry

Geometry	Shape of cutting edge	Application
MR6		<ul style="list-style-type: none"> • Stable machining condition • Geometry for rough milling • Suitable for most materials

Insert



Product code	Dimension (mm)					Grade	
	L	IC	S	RE	BS	P	K
						AC251P	AC151K
HNGX 0906ANN-MR6	5.3	16.5	6.35	1.0	1.13	●	●

● Stocked

Success Story

Workpiece: Marine engine

Material: GG25

Insert: HNGX 0906ANN-MR6

Grade: AC151K



Parameter:	Competitor	ACHTECK
Vc [m/min]	300	300
fz [mm]	0.27	0.32
ap [mm]	2.5	2.5
Coolant	Dry	Dry
Tool life (pcs)	2	3

Comparison: Tool Life(pc)

